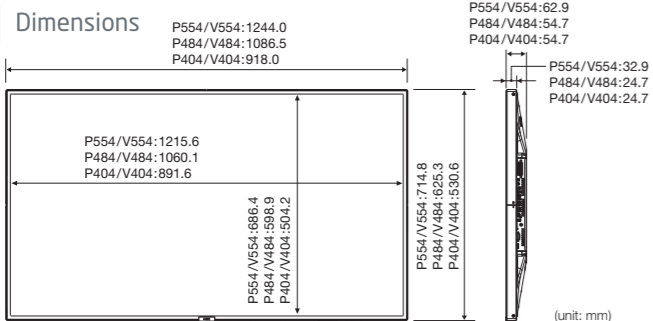


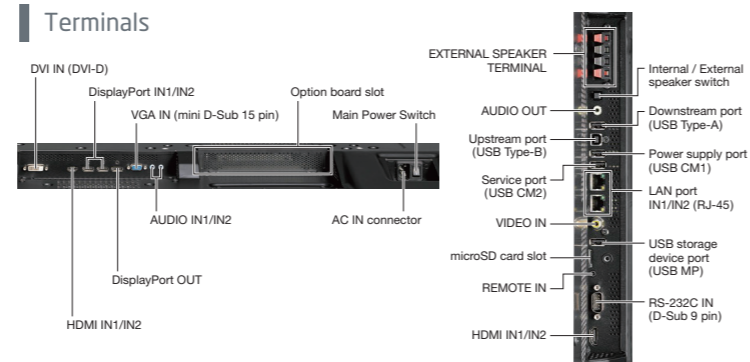
Specifications

MODEL	P554 / V554	P484 / V484	P404 / V404
LCD MODULE			
Viewable size (diagonal)	55"/1,387.8 mm	48"/1,209.4 mm	40"/1,016.1 mm
Active screen area (W x H)	1,209.6 x 680.4 mm	1,054.1 x 592.9 mm	885.6 x 498.2 mm
Panel technology	IPS		
Native resolution	1,920 x 1,080		
Brightness (factory setting / maximum)	500 / 700 cd/m ² in P-series, 350 / 500 cd/m ² in V-series		
Contrast ratio (typical)	1,200:1 (Native contrast)	4,000:1 (Native contrast)	
Viewing angle [°]	178 horizontal / 178 vertical (at CR>10)		
Response time (typical)	8 ms (G to G)		
Backlight	Edge LED backlight		
CONNECTIVITY			
Input terminals	DisplayPort	DisplayPort x 2	
	HDMI	HDMI x 2	
	DVI	DVI-D x 1	
	VGA	Mini D-sub 15 pin x 1	
	Video	RCA x 1	
	Audio	Digital: HDMI x 2, DisplayPort x 2, Analog: 3.5 mm stereo mini jack x 2	
Output terminals	DisplayPort	DisplayPort x 1	
	Audio	3.5 mm stereo mini jack x 1	
External control	RS232C	D-Sub 9 pin x 1	
	Ethernet	RJ-45 10BASE-T / 100BASE-TX x 2 (In/out)	
	Remote in	3.5 mm stereo mini jack x 1	
	Remote out	Possible via Ethernet	
	DCC/CI	Mini D-sub 15 pin / DVI-D	
USB Hub	Upstream	USB Type B x 1	
	Downstream	USB Type A x 1	
	Power supply	USB Type A 5V / 2A x 1	
	Media player	USB Type A x 1	
	Service	USB Type A x 1	
Option slots	Expansion slots		
Speaker output	External speakers	15 W + 15 W (8 Ω)	
	Internal speakers	10 W + 10 W	
POWER			
Power requirement (100 - 240 V)	3.6 - 1.5 A / 3.3 - 1.4 A	3.1 - 1.2 A / 2.7 - 1.1 A	2.9 - 1.2 A / 2.7 - 1.1 A
Power consumption (typical)	125 W / 110 W	105 W / 85 W	92 W / 75 W
Power consumption (standby mode)	0.5 W		
PHYSICAL SPECIFICATIONS			
Bezel width (L/R, T/B)	14.2 mm	13.2 mm	13.2 mm
Dimensions (without stands: W x H x D)	1,244.0 x 714.8 x 62.9 mm	1,086.5 x 625.3 x 54.7 mm	918.0 x 530.6 x 54.7 mm
Dimensions (with stands: W x H x D)	1,244.0 x 744.8 / 764.8 x 267.7 mm	1,086.5 x 655.3 / 675.3 x 267.7 mm	918.0 x 560.6 / 580.6 x 267.7 mm
Packaging dimensions (W x H x D)	1,430 x 920 x 250 mm	1,260 x 810 x 225 mm	1,067 x 697 x 202 mm
Net weight (without stands)	24.6 kg	17.6 kg	14.3 kg
Gross weight (with box)	33.0 kg	24.8 kg	18.3 kg
VESA compatible mounting interface	300 x 300 mm (M6, 4 holes)		
Supported orientations	Landscape, Portrait		
ENVIRONMENTAL CONDITIONS			
Operating temperature	0°C to 40°C		
Operating humidity	20% to 80% (without condensation)		
ADDITIONAL FEATURES			
Operating hours	24 / 7		
Sensors	Ambient light sensor	Integrated, triggered actions programmable	
	Motion sensor	Optional, external, 4 - 5 m range, triggered actions programmable	
	Temperature sensor	Integrated, 3 sensors, triggered actions programmable	
	NFC sensor	Integrated, 2 - cm range, free NEC Android App required	
ACCESSORIES			
Included	Power cord, DVI-D cable, IR remote control, batteries, setup manual, clamp and screw x 1, wall mount adapter sleeve x 4, wall mount screw x 4, SD-card cover and screw x 1, CD-ROM		

Dimensions



Terminals



Options

	Slot Board						Raspberry Pi Interface Kit	Sensor Kit Human (Motion), ambient light IR remote	Speaker	Stand	Wireless MultiPresenter Stick
	OPS-Single Board Controller (Computer)	HDBaseT	HDMI and DisplayPort	SDI							
	Core i5 60GB-SSD	Core i5 320GB-HDD		Quad-SDI	3G-SDI	HD-SDI					
P554 / V554											
P484 / V484	N8000-8866	N8000-8865	SB-07BC	SB-09BC	SB-04HC	SB-01HC	DS1-IF10CE	KT-RC2	SP-TF1	ST-401	MP10RX
P404 / V404											

Local options: please contact your supplier.

NEC is a registered trademark of NEC Corporation. MultiSync, NaViSet, SpectraView and MultiProfiler are trademarks or registered trademarks of NEC Display Solutions, Ltd. In Japan, the United States and other countries. The terms HDMI and HDMI High-Definition Multimedia Interface, and the HDMI Logo are trademarks or registered trademarks of HDMI Licensing LLC in the United States and other countries. DisplayPort and DisplayPort Compliance Logo are trademarks owned by the Video Electronics Standards Association in the United States and other countries. Trademark P.J.Link is a trademark applied for trademark rights in Japan, the United States and other countries and areas. HDBaseT™ and the HDBaseT Alliance logo are trademarks of the HDBaseT Alliance. Raspberry Pi is a trademark of the Raspberry Pi Foundation. CRESTRON and CRESTRON ROOMVIEW are trademarks or registered trademarks of Crestron Electronics, Inc. AMX is a trademark or registered trademark of AMX in the United States and other countries. VESA is a trademark of a nonprofit organization, Video Electronics Standard Association. Android is a trademark of Google Inc. microSD is a trademark of SD-3C, LLC. Windows is a registered trademark of Microsoft Corporation. Adobe® is registered trademark of Adobe Systems Incorporated in the United States and other countries. All other trademarks are the property of their respective owners. The images in this brochure are samples. All specifications are subject to change without notice. February 2017

Impressive professional digital signage with state-of-the-art technologies delivers what is needed at your sites

MultiSync® P554 / P484 / P404 / V554 / V484 / V404



Perfect readability under common light conditions is guaranteed thanks to the combination of a brightness output of 700 cd/m²* and an anti-glare surface.

* V-series is 500 cd/m²

The modern and slim design is the perfect fit to complement the surrounding architecture as well as for integration into any application and environment. The wide range of connectivity options and compatibility with high resolution signals up to 4K / 60 Hz secure a futureproof investment providing a long-lasting success story.

Highlights

Modern and Slim Design

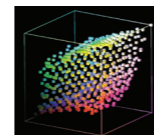
The new elegant slimline design provides unobtrusive integration into any application and environment. The simplicity of its shape supports an unhindered viewing experience ensuring that the screen content is the prevalent factor. Its reduced depth means that access to buildings and integration within interior design is straightforward and hassle-free.

Out of the Box Signage Solution

The integrated media player supports easy content playback and management for out-of-the box signage solutions that could not be simpler. Content can be transferred through the USB interface or a network connection.

SpectraView® Engine Precisely Recreates Colours with High Precision

The display can reproduce colours more accurately because it is equipped with a 3D lookup table and unique colour conversion algorithm through its dedicated image processing. Various colour gamuts can be expressed precisely according to sRGB and other industry standards without calibration of each image-quality setting. In addition, display settings designed for different applications are preset at the factory as "Picture Mode" settings*, so you can use a setting quickly by selecting it from the menu.



3D lookup table

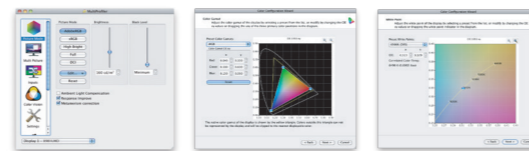
* P-series has a uniformity adjustment function as well.

Support for MultiProfiler® Software to Easily Realize Various Emulation Functions

The display supports MultiProfiler®, NEC's unique application software. Applying an ICC profile* to the display easily enables advanced colour reproduction, and you can also create and save ICC profiles for displays that require colour management.



* ICC profile: A file established by the International Color Consortium (ICC) that lists the colour gamut of the device to determine how a specific device reproduces colour. Files can be created for three main device types: displays, input devices (digital cameras, scanners, etc.) and output devices (printers, etc.).



ICC Profile Emulation Function

Using the developed MultiProfiler® application to apply various ICC profiles to the display has enabled highly accurate colour reproduction, even without software that supports colour management. By using simple operations, you can configure colour gamut such as sRGB and Adobe®RGB, and colour matching for displays of other companies is also supported.

Print Emulation Function

Using MultiProfiler® to apply ICC profiles to the display reproduces print images without needing software that supports colour management. For example, ICC profiles compliant with Japan Colour and other industry standards, ICC profiles configured and managed by individual print companies, and ICC profiles of printers generated by software that supports other colour management systems can be used.

Smart Expansion

An open platform modular approach is the smartest way to deliver tailor-made signage solutions, where scalable computing power such as Raspberry Pi compute modules or OPS* slot-in PCs are seamlessly embedded into the display.



OPS* slot

* OPS is a standard established by Intel Corporation.



Compute module

Requires the optional interface kit

Advanced Heat Management

Monitoring and managing the temperature of each display is crucial to secure reliability and longevity. An industrial-strength, premium-grade panel with additional thermal protection, internal temperature sensors with self-diagnostics, and fan-based technology allow for 24/7 operation and protect your display investment.

Intelligent Wireless Data Function

The built-in near field communication (NFC) chip allows data to be read and written via a mobile phone or tablet PC. Users can significantly reduce installation costs as displays can be easily configured and serviced using the NEC NFC Android app. This is available even when the display is switched off and is especially useful on larger installations.



HDBaseT Support*

Simplify your installations with HDBaseT, which is optimized for video applications and supports uncompressed Full-HD digital video, audio, Ethernet, and various control signals. With only a single cable (up to 100 m) to run, infrastructure and labour costs are reduced, installations are significantly easier, and there is no cable clutter to manage. With uncompressed HD video support, images have never been more stunning. What's more, control signals are contained in the same cable.



* Requires the optional HDBaseT board, SB-07BC

Proof of Play

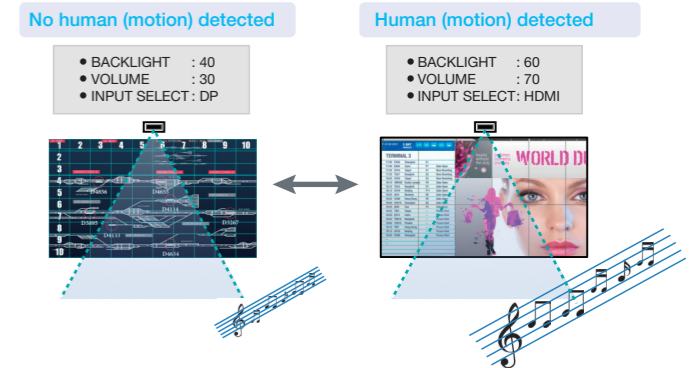
This function provides accurate proof that displays are working as established and is helpful when checking on the status of the displays installed at user's site.

Human Sensor and Advanced Auto Dimming

This optional human (motion) sensor accessory (KT-RC2) helps to deliver creative digital signage to end users by allowing for dynamic control of brightness, audio and source inputs while saving on operating costs. Built-in auto dimming adjusts the backlight of the LCD automatically depending on the amount of ambient light.



• Practical example



NaViSet Administrator 2

This software is an all-in-one remote support solution that runs from a central location and provides monitoring, asset management and control of the majority of NEC display devices and Windows computers. It is ideal for multi-device installations over larger infrastructures.



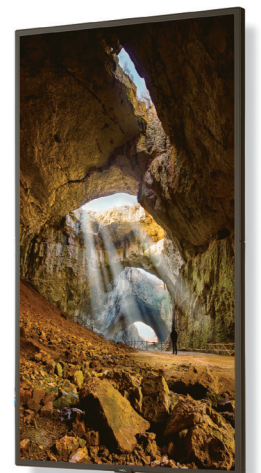
Dedicated Colour Calibration Software*

As the brightness and colour temperature of the LCD change with time, colours may not match across multiple screens. Our dedicated colour calibration software ensures colour uniformity and fidelity across multiple screens, creating a perfectly matched image in tiled environments.

* NEC Display Wall Calibrator

Other Useful Features and Functions

- Landscape/portrait capable
- Scheduler with real-time clock
- Intelligent power management system
- Power-on delay
- Screen saver function
- Aspect ratio control
- Memo function
- Carbon footprint metre
- Image and on-screen display flip
- Picture-in-picture, picture-out-picture
- Built in speakers
- Point zoom
- Control lock function
- 6-axis colour adjustments and sRGB standard
- Advanced video settings (Noise reduction, adaptive contrast)
- Colour temperature adjustment
- Programmable gamma setting (3 settings)
- DICOM simulation
- Plug and play (DDC/CI, DDC2B)
- HDCP (High-bandwidth Digital Content Protection)
- Ethernet and RS-232C control and communication
- CRESTRON ROOMVIEW™
- AMX Discovery HTTP server
- PJLink
- Self-diagnosis
- Status log function
- Firmware update over LAN
- Rear metal cabinet with VESA Standard (FDMIv1) Mounting Interface



MultiSync® P554 / P484 / P404 / V554 / V484 / V404